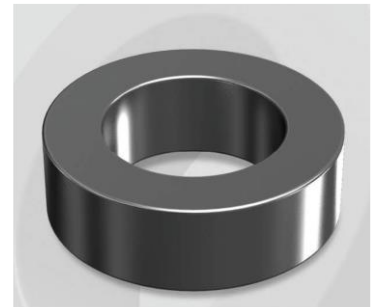


# CM1625060G

OD : 1625

## Electrical Characteristics

Material	Permeability ( $\mu$ )	AL $\pm$ 8% (nH/N <sup>2</sup> )	DCB (% min) @ 50 Oe	Coreloss (mW/cm <sup>2</sup> , max) @50kHz, 100G
MPP	60	184	73.60	1.8



## Core Dimensions

Dimensions		Uncoated		Coated		Color	Packaging
		(mm)	(inch)	(mm)	(inch)		
OD	(Max)	165.0	6.496	167.2	6.583	Black	Box Qty = 4 pcs
ID	(min)	88.9	3.500	86.9	3.421		
HT	(max)	25.4	1.000	27.3	1.075		

## Physical Characteristics

Cross Section (A)	Path Length ( $l$ )	Window Area (Wa)	Volume (V)	Breakdown Voltage (Vac)
9.46 cm <sup>2</sup>	38.65 cm	59.31 cm <sup>2</sup>	365.63 cm <sup>3</sup>	1,000
1.466 in <sup>2</sup>	15.22 in	11,705,189 cmil	22.311 in <sup>3</sup>	

## Winding Information

0% Winding length/turn (cm)		
13.490		
40% winding factor Surface Area (cm <sup>2</sup> )		
916.95		
40% Wound Di.(mm)		
OD	ID	HT
188.62	56.89	53.02

## Typical DC Bias Performance

